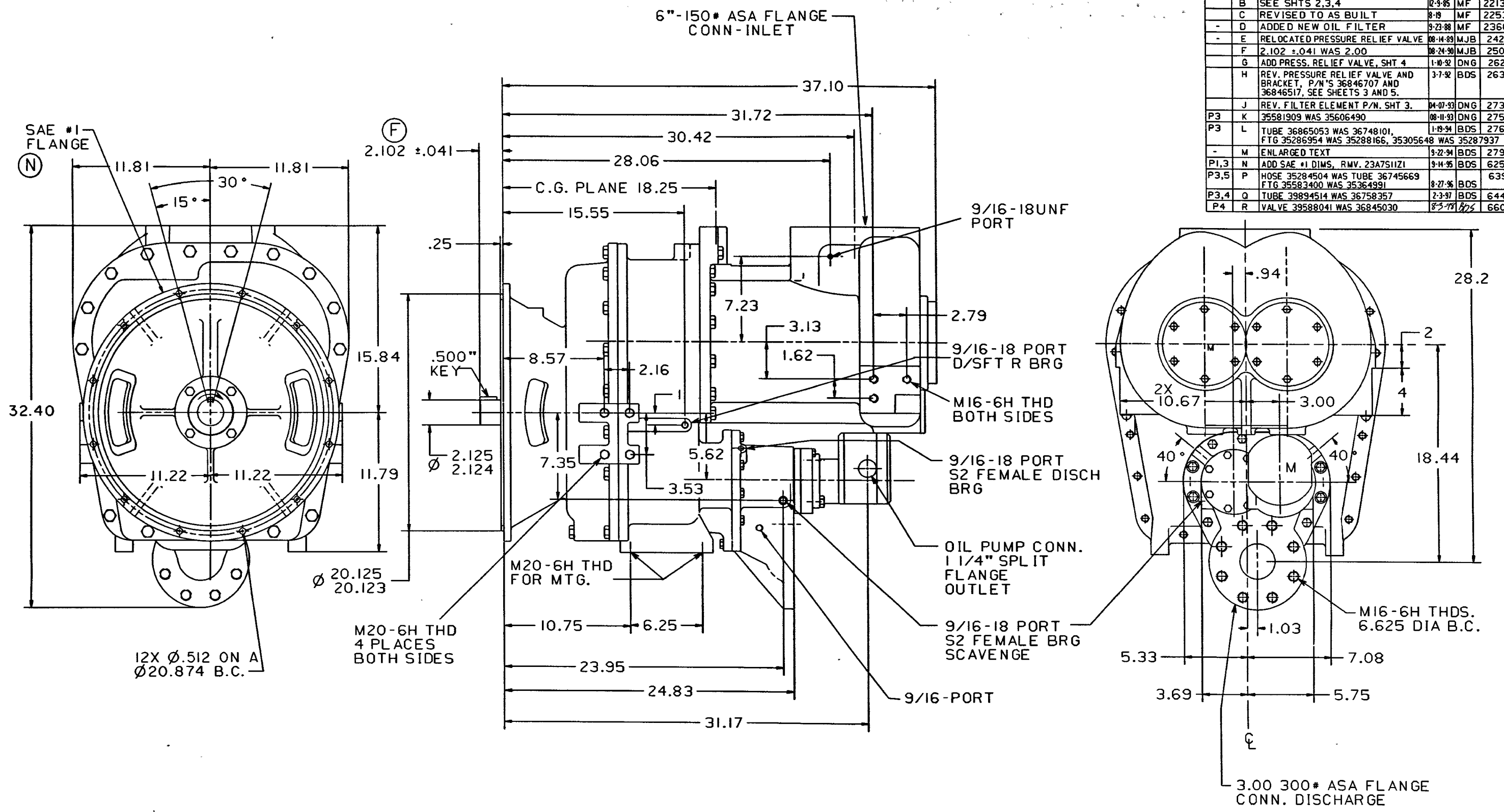


REVISIONS					
ZONE	REV.	DESCRIPTION	DATE	APVD	E/C
	A	ORIGINAL RELEASE	8-30-85	MF	22078
	B	SEE SHTS 2,3,4	12-9-85	MF	22139
	C	REVISED TO AS BUILT	8-19	MF	22534
	D	ADDED NEW OIL FILTER	9-23-88	MF	23667
	E	RELOCATED PRESSURE RELIEF VALVE	08-14-89	MJB	24244
	F	2.102 ±.041 WAS 2.00	08-24-90	MJB	25029
	G	ADD PRESS. RELIEF VALVE, SHT 4	1-10-92	DNG	26216
	H	REV. PRESSURE RELIEF VALVE AND BRACKET, P/N'S 36846707 AND 36846517, SEE SHEETS 3 AND 5.	3-7-92	BDS	26342
	J	REV. FILTER ELEMENT P/N. SHT 3.	04-07-93	DNG	27360
P3	K	35581909 WAS 35606490	08-11-93	DNG	27560
P3	L	TUBE 36865053 WAS 36748101, FTG 35286954 WAS 35288166, 35305648 WAS 35287937	1-19-94	BDS	27655
	M	ENLARGED TEXT	9-22-94	BDS	27983
PI,3	N	ADD SAE #1 DIMS, RMV. 23A75I1Z1	9-14-95	BDS	62558
P3,5	P	HOSE 35284504 WAS TUBE 36745669 FTG 35583400 WAS 35364991	8-27-96	BDS	63912
P3,4	Q	TUBE 39894514 WAS 36758357	2-3-97	BDS	64469
P4	R	VALVE 39588041 WAS 36845030	8-3-99	BDS	66023



<p>WARNING: THE EXPORT OR REEXPORT OF THIS DRAWING OR A PRODUCT PRODUCED BY THIS DRAWING IS SUBJECT TO U.S. EXPORT ADMINISTRATION REGULATIONS AND OTHER APPLICABLE GOVERNMENTAL RESTRICTIONS OR REGULATIONS.</p> <p>COPYRIGHT © 1994 INGERSOLL-RAND COMPANY ALL RIGHTS RESERVED</p>	<p>THIS DRAWING CONTAINS CONFIDENTIAL AND TRADE SECRET INFORMATION, IS THE PROPERTY OF INGERSOLL-RAND CO., AND IS GIVEN TO THE RECEIVER IN CONFIDENCE. THE RECEIVER BY RECEPTION AND RETENTION OF THE DRAWING ACCEPTS THE DRAWING IN CONFIDENCE AND AGREES THAT, EXCEPT AS AUTHORIZED IN WRITING BY INGERSOLL-RAND CO. IT WILL (1) NOT USE THE DRAWING OR ANY COPY THEREOF OR THE CONFIDENTIAL OR TRADE SECRET INFORMATION THEREIN; (2) NOT COPY THE DRAWING; (3) NOT DISCLOSE TO OTHERS EITHER THE DRAWING OR THE CONFIDENTIAL OR TRADE SECRET INFORMATION THEREIN; AND (4) UPON COMPLETION OF THE NEED TO RETAIN THE DRAWING, OR UPON DEMAND, RETURN THE DRAWING, ALL COPIES THEREOF, AND ALL MATERIAL COPIED THEREFROM.</p>	<p>UNLESS OTHERWISE SPECIFIED DIMENSIONS ARE IN INCHES. MICRO FILM BLOWBACK SCALE 3 INCHES</p> <p>0 .5 1 1.5 2 2.5 3</p> <p>UNLESS OTHERWISE SPECIFIED TOLERANCES ON DIMENSIONS ARE AS SPECIFIED ON DRAWING 36865734</p>	<p>CAD LAYOUT NAME PCD.INSTALL-DWG.HR2.36735967.S1</p> <p>GEOMETRIC SYMBOLS</p> <p>— STRAIGHTNESS // PARALLELISM ○ CIRCULARITY < ANGLARITY ∅ CYLINDRICITY ⊕ TRUE POSITION ∇ FLATNESS ⊙ CONCENTRICITY △ PROFILE OF SURFACE ⊖ CIRCULAR RUN OUT ∩ PROFILE LINE ⊘ TOTAL RUN OUT ⊥ PERPENDICULARITY</p>	<p>WEIGHT EST. J</p> <p>— LBS.</p>	<p>UNIT: HR2 750-900 CFM</p> <p>THIRD ANGLE PROJ.</p>	<p>INGERSOLL-RAND COMPANY CONSTRUCTION & MINING PORTABLE COMPRESSOR DIVISION MOCKSVILLE, NC 27028</p>
				<p>WEIGHT ACTUAL</p> <p>1700 LBS.</p> <p>NEXT HIGHER ASSY</p>	<p>DATE</p> <p>TITLE</p> <p>226/127.5-2 STAGE 0/U INSTALLATION DRAWING</p>	